

MATCH LINE SEE SHEET 14

# ORCHARDS OF WESTLAKE - PHASE I

BEING PORTIONS OF SECTIONS 5, 6, 7 AND 8, ALL IN  
TOWNSHIP 43 SOUTH, RANGE 41 EAST,  
CITY OF WESTLAKE, PALM BEACH COUNTY, FLORIDA.

MATCH LINE SEE SHEET 14

SCALE 1" = 40'

SEE NOTE ON SHEET 2 FOR BASIS OF BEARINGS

206

MATCH LINE SEE SHEET 16

TRACT "S"  
(MINTO)  
(55.456 AC±)

W.M.T. #8  
(S.I.D.)  
(3.407 AC±)

TRACT "S"  
(MINTO)  
(55.456 AC±)

O.S.T. #11  
(S.I.D.)  
(7.223 AC±)

UNPLATTED

SOUTH BOUNDARY OF SECTION 5,  
TOWNSHIP 43 S., RANGE 41 E.  
NORTH BOUNDARY OF SECTION 6,  
TOWNSHIP 43 S., RANGE 41 E.

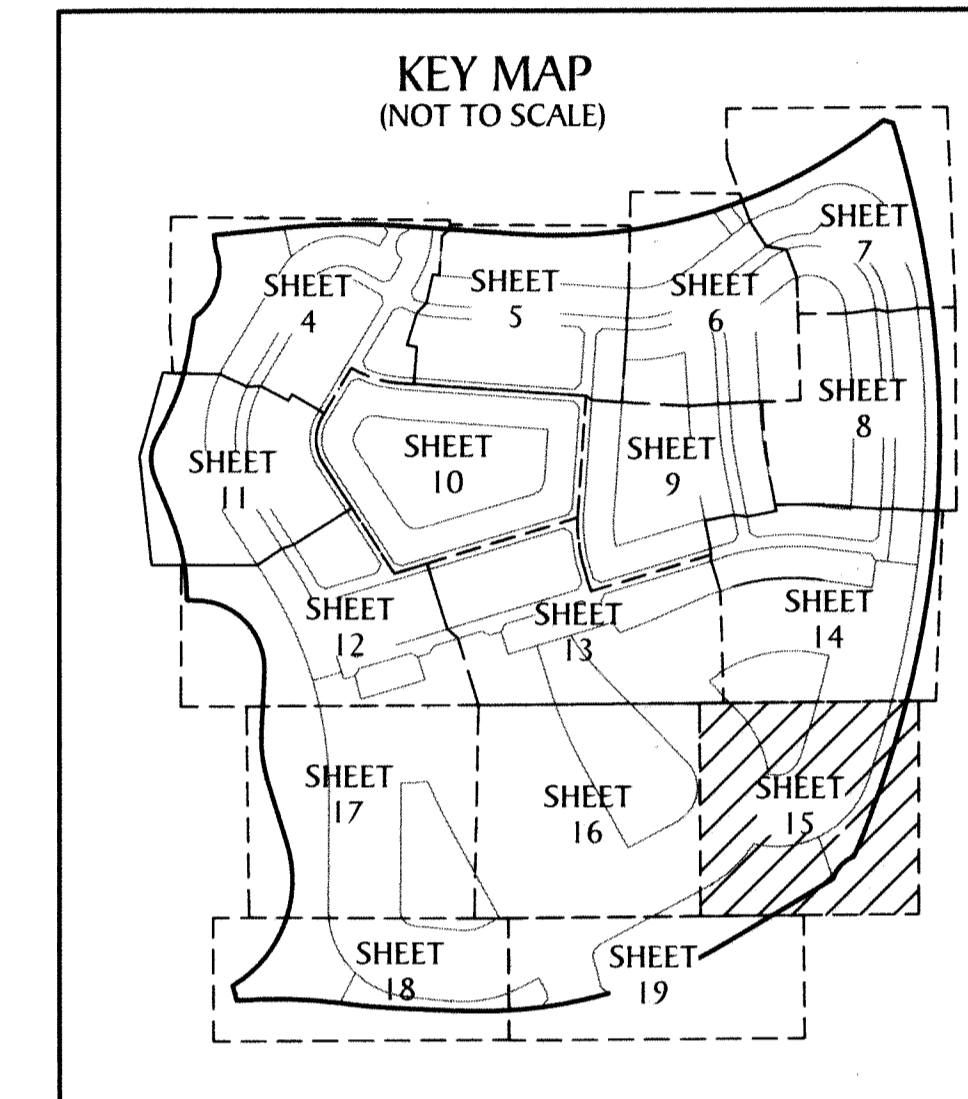
W.M.T. #9  
(S.I.D.)  
(5.836 AC±)

O.S.T. #11  
(S.I.D.)  
(7.223 AC±)

LIMITS  
OF PLAT

LIMITS  
OF PLAT

UNPLATTED



- LEGEND**
- P.O.B. ----- POINT OF BEGINNING
  - P.O.C. ----- POINT OF COMMENCEMENT
  - P.B. ----- PLAT BOOK
  - D.B. ----- DEED BOOK
  - O.R./O.R.B. ----- OFFICIAL RECORDS BOOK
  - PG./PG(S) ----- PAGE(S)
  - NAD ----- NORTH AMERICAN DATUM
  - W.M.T. ----- WATER MANAGEMENT TRACT
  - O.S.T. ----- OPEN SPACE TRACT
  - P.B.C. ----- PALM BEACH COUNTY
  - U.E. ----- UTILITY EASEMENT
  - D.E. ----- DRAINAGE EASEMENT
  - L.M.A.E. ----- LAKE MAINTENANCE ACCESS EASEMENT
  - 7-43-41 ----- SECTION-TOWNSHIP-RANGE
  - R ----- RADIUS
  - L ----- ARC LENGTH
  - D ----- DELTA ANGLE
  - CB ----- CHORD BEARING
  - C ----- CHORD
  - N.T. ----- NON-TANGENT
  - N.T.C. ----- NON-TANGENT CURVATURE
  - P.C. ----- POINT OF CURVATURE
  - P.T. ----- POINT OF TANGENCY
  - R/W ----- RIGHT-OF-WAY
  - (R) ----- RADIAL
  - (NR) ----- NON-RADIAL
  - HOA ----- HOMEOWNERS ASSOCIATION
  - S.I.D. ----- SEMINOLE IMPROVEMENT DISTRICT
  - PRM ----- PERMANENT REFERENCE MONUMENT
  - ----- PERMANENT CONTROL POINT
  - ----- FOUND PERMANENT REFERENCE MONUMENT
  - ----- SET 4"x4" CONCRETE MONUMENT WITH 2" ALUMINUM DISK STAMPED "PRM LB 7768"

**GeoPoint**  
Surveying, Inc.

4152 W. Blue Heron Blvd. Phone: (561) 444-2720  
Suite 105 www.geopointsurvey.com  
Riviera Beach, FL 33404 Licensed Business Number LB 7768

Sheet No. 15 of 19 Sheets